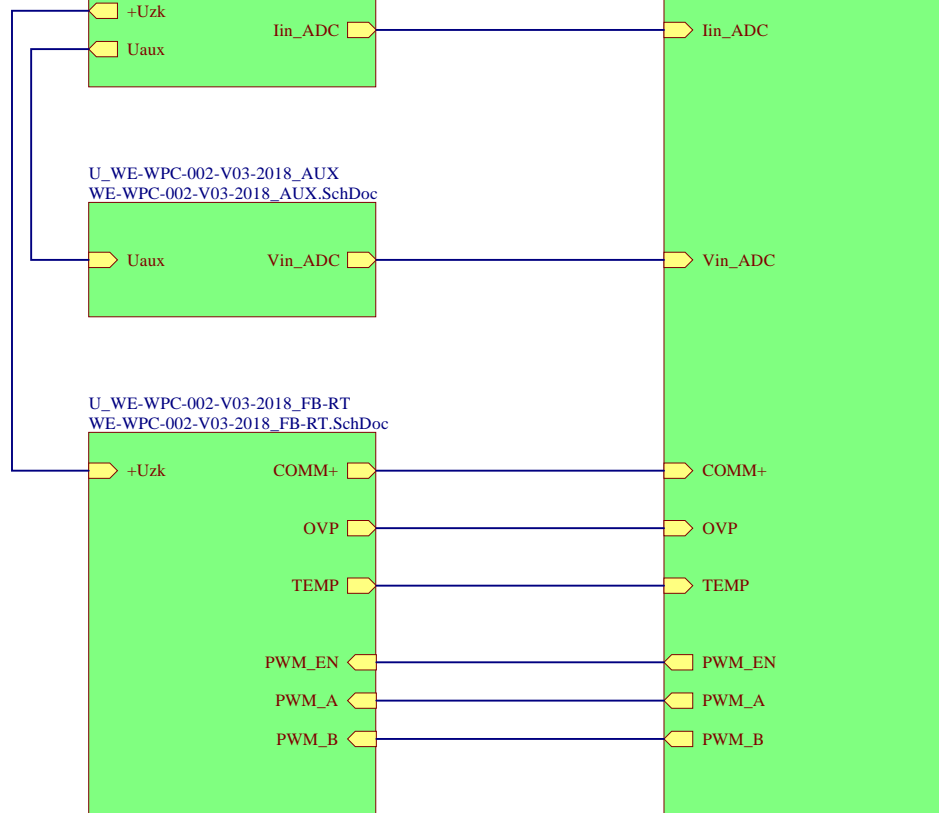


A

A

U_WE-WPC-002-V03-2018_InputFilter
WE-WPC-002-V03-2018_InputFilter.SchDoc

U_WE-WPC-002-V03-2018_MCU
WE-WPC-002-V03-2018_MCU.SchDoc



U_WE-WPC-002-V03-2018_AUX
WE-WPC-002-V03-2018_AUX.SchDoc

U_WE-WPC-002-V03-2018_FB-RT
WE-WPC-002-V03-2018_FB-RT.SchDoc

971100365
Plastic Spacer M3 I/A / 10mm

971100365
Plastic Spacer M3 I/A / 10mm

971100365
Plastic Spacer M3 I/A / 10mm

971100365
Plastic Spacer M3 I/A / 10mm

970300365
Plastic Spacer M3 I/I / 30mm

970300365
Plastic Spacer M3 I/I / 30mm

970300365
Plastic Spacer M3 I/I / 30mm

970300365
Plastic Spacer M3 I/I / 30mm

PCB Number
WE-WPC-001-V04-2018

WE-Logo Solder Mask

Hole M3
Diameter 3.2mm

Hole M3
Diameter 3.2mm

Hole M3
Diameter 3.2mm

Hole M3
Diameter 3.2mm

REV.	DATE	BY	CHECKED

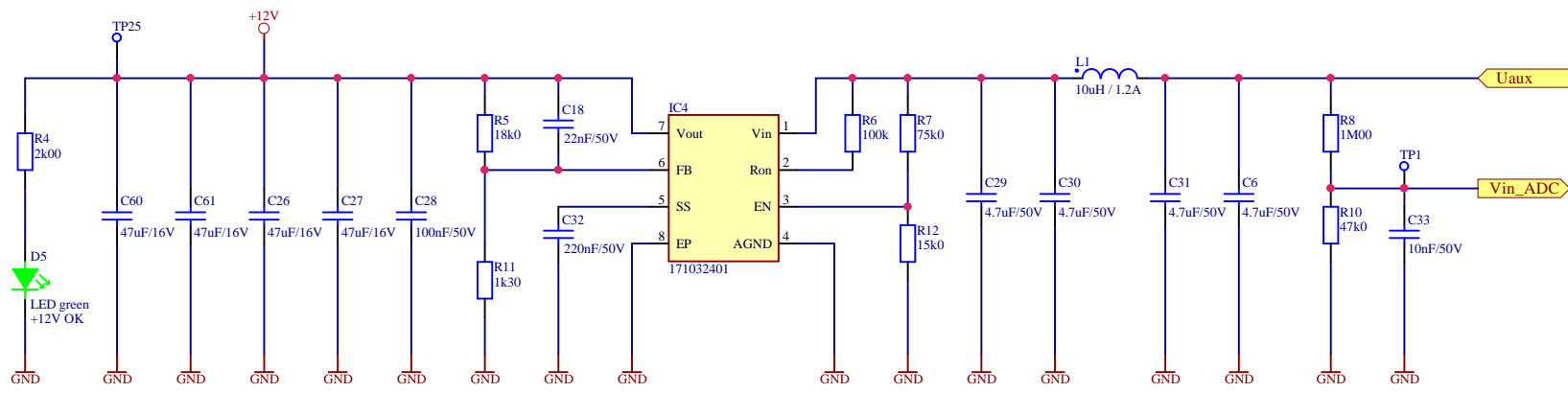


Würth Elektronik eiSos GmbH & Co. KG
EMC & Inductive Solutions
Max-Eyth-Str. 1
74638 Waldenburg
Germany
Tel.: +49 (0) 79 42 945 - 0
www.we-online.com
eiSos@we-online.com

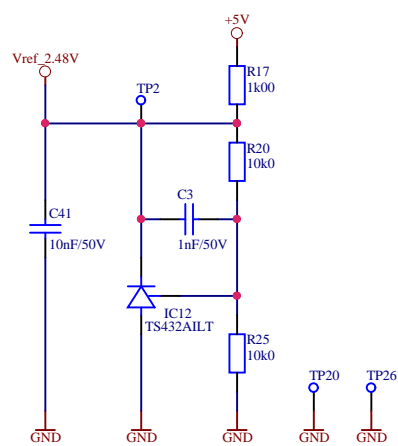
DESCRIPTION:	
WPC-200W Transmitter Board	
Main Sheet	SIZE
WE-WPC-002-V03-2018	A4

D

D



Auxiliary Supply



Voltage Reference 2.48V

REV.	DATE	BY	CHECKED



Würth Elektronik eiSos GmbH & Co. KG
EMC & Inductive Solutions
Max-Eyth-Str. 1
74638 Waldenburg
Germany
Tel.: +49 (0) 79 42 945 - 0
www.we-online.com
eiSos@we-online.com

DESCRIPTION:	
WPC-200W Transmitter Board	
Auxillary Supply	SIZE
WE-WPC-002-V03-2018	A4

